



GARDEN CLUB
OF VIRGINIA

DAFFODIL DAY

RICHMOND 2022

Schedules

Horticulture
Artistic Design
Photography

Awards List

Horticulture
Artistic Design
Photography

HORTICULTURE

DAFFODIL DAY 2022

SCHEDULE OF CLASSES

Section A "Garden Club of Virginia Collections"

Open only to Garden Club of Virginia members.

- Classes 1, 2 and 9 exhibited in large green vases.
- Classes 7, 8 and 10 exhibited in block with single large test tube.
- Classes 4, 5, 6, 11, and 12 exhibited in block with five large test tubes.
- Class 13 exhibited in block with five small test tubes.

Class 1 **The Eleanor Truax Harris Cup**
Twenty-four blooms, eight varieties, three stems each, from at least four divisions of daffodils. Exhibitor cannot win in two consecutive years.

Class 2 **The Mary McDermott Beirne Challenge Bowl**
Four all-white varieties, three stems each, from at least two of the first seven divisions. Exhibitor cannot win in two consecutive years.

Class 3 **Best Interclub Collection**
For daffodil chairmen of the GCV, exhibited in the names of their respective clubs. Twelve varieties, one stem each from 2011 through 2020 club collections from at least four years' collections. Each variety named, dated and color-coded.

Exhibited in club's name. Exhibited in four – three-hole planks.

Class 4 **The Edith Hardison Walker Award**
Ten varieties, one stem each, from any collection, previous and/or current. Name the variety, hybridizer, color code, and date of collection.

Class 5 **The Katherine Leadbeater Bloomer Award**
Five different varieties from five different divisions.

Class 6 **The Louise Morris Goodwin Bowl**
For individual members of the GCV. Five varieties of American-bred daffodils. One stem each. Name of the originator must be on the label of each stem. Entries in this class are eligible for the ADS Red-White-Blue Ribbon.

Class 7 **The Jennette H. Rustin Trophy**
Daffodil parent and one child. Two cultivars, one being the parent (seed or pollen) of the other. May be won only one time by an exhibitor.

Class 8 **The Suzanne Bresee Trophy**
Vase of three of a kind Historics, pre-1940 cultivars. Entries in this class

would be eligible for the ADS best set of three Historic Best of Three ribbon.

Class 9 **Worshipful Company of Gardeners of London Cup** **Novice Class**
Three varieties, one stem each, from Divisions 1-7.

Class 10 **The Patricia Mann Crenshaw Award, Novice Class**
A class for those who have never won a blue ribbon in a show approved by the American Daffodil Society. A single specimen from any division. Only one entry per exhibitor.

Class 11 **The William G. Pannill Award**
Five standard cultivars, one stem each, from at least three of the first seven divisions. Cultivars must have been bred by Mr. Pannill. Exhibitors cannot win in two consecutive years.

Class 12 **Anne Duvall Miller Massie Perpetual Trophy**
Five different pre-1940 standard cultivars, one stem each. Name, division, year of registration (or introduction) must be on label of each stem. Exhibitor cannot win in consecutive years. Entries in this class are eligible for ADS Historic ribbons.

Class 13 **Katherine Beale Perpetual Trophy**
Five different miniature cultivars, seedlings and/or species, one stem each. Entries in this class are eligible for ADS Miniature ribbons including the ADS Lavender Ribbon.

Section B "Trophy Collections"

Classes 14-19 to be exhibited in block with five large test tubes.

Class 14
A collection of five cultivars, one stem each, from Division 2 or 3 and having cups predominantly red or orange.

Class 15
Five varieties, one stem each, with pink coloring in cup, from any division.

Class 16
Five varieties, one stem each, of white daffodils, from any division.

Class 17
Five varieties, one stem each, from at least four divisions, all yellow daffodils.

Class 18 **ADS Maroon Ribbon**
Five varieties, one stem each, of reverse bicolor daffodils.

Class 19**ADS Red-White-Blue Ribbon**

Five varieties, one stem each, of American-bred daffodils. Name of originator MUST be on each stem.

Class 20**ADS Marie Bozievich Ribbon**

Twelve different cultivars, one stem each, from at least four RHS divisions.
Exhibited in two 22" planks, six test tubes each.

Class 21**ADS Elise Havens Ribbon**

Twelve different cultivars, one stem each, from at least three divisions from RHS divisions 5 through 10.
Exhibited in two 22" planks, six test tubes each.

Class 22**ADS Throckmorton Ribbon**

Fifteen cultivars, one stem each, with 15 different combinations of division and color code. Color code is required on labels for each stem.
Exhibited in three planks, five large test tubes each.

Class 23**ADS Carey E. Quinn Award
(Silver Medal or Ribbon)**

Twenty- four standard cultivars and/or species, one stem each, from at least five RHS divisions. This class is open to ADS members only. The silver medal may be won only once. A former winner may enter, but may receive only the Silver Quinn Ribbon.
Exhibited in three 33" planks, eight test tubes each.

Section C "Seedlings"

Seedlings, single specimens grown and exhibited by the originator only, with designated number, classification and parentage, if known. Exhibitors may make up to three entries in each class for single stems and vases of three, provided each is a different cultivar or species.

Class 24

One stem of a standard seedling.

Exhibited in block with single large test tube.

Standard Daffodils Section D

Section D

Single stems: *Exhibited in block with single large test tube.*

Division and Color Code required.

Section E

Three stems of one variety: *Exhibited in large green vase.*

Division and Color Code required.

Section F

Five different varieties, one stem each. Division and Color Code required. *Exhibited in block with five large test tubes.*

Predominant: means color in at least TWO (2) adjacent cup zones.

Colored: means any color other than white.

Reverse Bicolor: has a predominantly yellow perianth and a predominantly white cup in AT LEAST TWO adjacent cup zones.

SECTION	Class		
	D	E	F
Division 1 - Trumpet Daffodil			147
Colored perianth, yellow trumpet	25	86	
Colored perianth, red or orange trumpet	26	87	
Colored perianth, pink in trumpet	27	88	
Reverse bicolor	28	89	
White perianth, yellow, orange or red trumpet	29	90	
White perianth, pink trumpet	30	91	
White perianth, white trumpet	31	92	
Division 2 - Large-cupped Daffodil			148
Colored perianth, yellow cup	32	93	
Colored perianth, cup predominantly red or orange	33	94	
Colored perianth, cup rimmed red or orange	34	95	
Colored perianth, pink in cup	35	96	
Reverse bicolor	36	97	
White perianth, cup predominantly yellow	37	98	
White perianth, white cup rimmed yellow	38	99	
White Perianth, cup predominantly orange or red	39	100	
White Perianth, cup rimmed orange or red	40	101	

White Perianth, predominantly pink	41	102	
White Perianth, cup rimmed pink	42	103	
White Perianth, white cup	43	104	
Division 3 - Small-cupped Daffodils			149
Colored perianth, yellow or pink cup	44	105	
Colored perianth, cup predominantly orange or red	45	106	
Colored perianth, cup rimmed red or orange	46	107	
Reverse bicolor	47	108	
White perianth, cup predominantly yellow	48	109	
White perianth, white cup trimmed yellow	49	110	
White perianth, cup predominantly orange or red	50	111	
White perianth, cup rimmed red or orange	51	112	
White perianth, pink in cup	52	113	
White perianth, white cup	53	114	
SECTION	Class		
	D	E	F
Division 4 - Double Daffodils			150
Colored perianth, one bloom to stem	54	115	
White perianth, one bloom to stem	55	116	
Any color, two or more blooms to stem	56	117	
Division 5 - Triandrus Daffodils			151
Colored perianth, yellow cup	57	118	
Colored perianth, red or orange cup	58	119	
Reverse bicolor	59	120	
White perianth, colored cup	60	121	
White perianth, white cup	61	122	
Division 6 - Cyclamineus Daffodils			152
Colored perianth, colored cup	62	123	
Colored perianth, orange or red cup	63	124	
Reverse bicolor	64	125	
White perianth, yellow, red or orange cup	65	126	
White perianth, pink in cup	66	127	
White perianth, white cup	67	128	

Division 7-Jonquilla and Apodanthus Daffodils			153
Colored perianth, yellow or pink cup	68	129	
Colored perianth, orange or red cup	69	130	
Reverse bicolor	70	131	
White perianth, yellow, red or orange cup	71	132	
White perianth, pink in cup	72	133	
White perianth, white cup	73	134	
Division 8 - Tazetta Daffodil Cultivars			154
Colored perianth, white or colored cup	74	135	
White perianth, pink in cup	75	136	
White perianth, white, yellow or orange cup	76	137	
Division 9 - Poeticus Daffodil			155
White perianth, eye green	77	138	
White perianth, eye any other color	78	139	
Division 10 - Bulbocodium Daffodil	79	140	
Division 11 - Split-Corona Daffodil Cultivars			156
Collar daffodil, colored perianth, one bloom to stem	80	141	
Collar daffodil, white perianth, one bloom to stem	81	142	
Papillon daffodil, any color, one bloom to stem	82	143	
Any color, two or more blooms to stem	83	144	
Division 12 - Miscellaneous Daffodils	84	145	157
Division 13 -			
Species, Wild Variants & Wild Hybrids	85	146	158

Section G - Small Growers

This section is open to exhibitors growing 50 or fewer cultivars and/or species. Exhibitors may make up to three entries in each class, provided each is a different cultivar or species.

Single standard stem exhibited in block with single large test tube.

Three stems, one standard variety exhibited in large green vase.

Single stem miniatures exhibited in block with single small test tube.

Three stem miniatures, one variety, exhibited in small green vase.

	Single Stem	Three Stems
Division 1	159	167
Division 2	160	168
Division 3	161	169
Division 4	162	170
Divisions 5, 6	163	171
Divisions 7, 8	164	172
Divisions 9 - 13	165	173
Miniature, any division	166	174

Section H - Miniature Daffodils

Exhibitors may make up to three entries in each class for single stems and vases of three, provided each is a different cultivar or species.

Single stems exhibited in block with single small test tube.

Three stems, one variety, exhibited in small green vase.

	Single Stem	Three Stems
Division 1	175	188
Division 2	176	189
Division 3	177	190
Division 4	178	191
Division 5	179	192
Division 6	180	193
Division 7	181	194
Division 8	182	195
Division 9	183	196
Division 10	184	197
Division 11	185	198
Division 12	186	199
Division 13	187	200

Section I - Miniature Daffodil Collections

Class 201 **ADS Lavender Ribbon**

Five cultivars, seedlings or species, one stem each.

Exhibited in block with five small test tubes.

Class 202 **ADS Miniature Red-White-Blue Ribbon**

Five cultivars or seedlings of American breeding, one stem each. Name of originator must be labeled on each stem except seedlings shown by the originator. Entries in this class are also eligible for the Lavender Ribbon.

Exhibited in block with five small test tubes.

Class 203 **Delia Bankhead Ribbon**

Best collection of nine miniature cultivars and/or species, one stem each, from at least three different RHS divisions.

Exhibited in block with nine small test tubes.

Class 204 **Roberta C. Watrous Award**

Twelve cultivars and/or species of miniature daffodils from at least three RHS divisions. This class is open to ADS members only. First-time winners may receive the Silver Watrous Medal. Former winners receive the Silver Watrous Ribbon.

Exhibited in block with twelve small test tubes.

Class 205

Harold Koopowitz Miniature Collection Ribbon

Twenty-four cultivars and/or species of miniature daffodils, one stem each, from at least five RHS divisions. This class is open to ADS members only.

Exhibited in two blocks with twelve small test tubes each.

Section J - Historic Daffodils

This section is open to all cultivars, i.e., not species, introduced or in gardens before 1940. All cultivars shall be labeled with name, division number and year of registration (or introduction) as listed on **daffseek.org**.

Exhibitors may have up to three entries, of three different cultivars in the single stem and three stem classes.

Single stems exhibited in block with single large test tube.

Three stems exhibited in a large green vase.

	Single Stem	Three Stems
Division 1	206	213
Division 2	207	214
Division 3	208	215
Division 4	209	216
Divisions 5, 6	210	217
Divisions 7, 8	211	218
Divisions 9 - 12	212	219

Class 220

Single stem of miniature cultivar.

Exhibited in block with single small test tube.

Class 221

Collection of five different standard cultivars.

Exhibited in block with five large test tubes.

Section K - Intermediate Daffodils

An Intermediate Daffodil is defined as a single floret cultivar, typically greater than 50 mm through 80 mm in diameter ($1\frac{15}{16}$ to $3\frac{1}{8}$ inches), from RHS Divisions 1, 2, 3, 4 and 11. Exhibitors may have up to three entries, of three different cultivars, in the single class and in the three stem classes. Each individual stem in this section is eligible for the ADS Intermediate Ribbon.

Single stems exhibited in block with single large test tube.

Three stems exhibited in large green vase.

	Single Stem	Three Stems
Division 1	222	227
Division 2	223	228
Division 3	224	229
Division 4	225	230
Division 11	226	231

Class 232

Collection of five varieties, one stem each, *exhibited in block with five large test tubes*. Eligible for Best Intermediate Collection of Five Ribbon.

Section L - Classic Division

A Classic Daffodil is defined as a standard cultivar which was registered between 1940 and 1969 inclusive. Division, color code and registration date must be listed on the entry card.

Exhibited in block with single large test tube.

Standard Daffodil	Class
Division 1	233
Division 2	234
Division 3	235
Division 4	236
Divisions 5, 6	237
Divisions 7, 8	238
Divisions 9 - 12	239

Class 240

Three stems of ONE standard variety.

Exhibited in large green vase.

Class 241

Collection of five varieties, one stem each.

Exhibited in block with five large test tubes.

Section M - Youth Division

Open to exhibitors 18 or younger. Participants are not restricted to this section. They may enter other sections for which they qualify. Exhibitors may enter up to three different single stem entries in each class in Section M.

Exhibited in block with single large test tube.

Standard Daffodil	Class
Division 1	242
Division 2	243
Division 3	244
Division 4	245
Divisions 5, 6	246
Divisions 7, 8	247
Divisions 9 - 13	248

Class 249

The Brooke Ager Youth Challenge Class

One stem of ‘Marieke’ 1Y-GYY, the cultivar designated by the ADS Youth Committee as the Youth Bulb of the Year for 2022. This class is open to any youth—ADS membership is not required.

Section N – Daffodil Recognition Awards

Class 250

The Gale and Lockwood Frizzell Award

(Donated by the Charlottesville Garden Club)

Best entry of 3 different varieties of IRISH Blooms (including No. Ireland)

from Divisions 1 through 4, coming from one or more of these 4 divisions. Name, color code, and name of hybridizer required.

Exhibited in large green vase.

Class 251 The Centennial Challenge: 1930 Test Collection Award

In honor of the GCV Centennial, this class is for entry of daffodils on the first GCV Test Collection in 1930. Entry may contain any number of daffodils from that list, one stem each. The winner will be judged on both the quality of the blooms and the number of varieties in the entry.

Exhibited in blocks with large test tubes.

Section O – Container-Grown Daffodils

Blooms are to be grown in and exhibited in a container or pot. All bulbs in any one container shall be of the same cultivar or species. Container-grown daffodils may be grown in protected areas. No bloom or exhibit in this section shall be eligible for any ADS award other than the ADS awards for container-grown daffodils. Judges may subdivide classes by daffodil division.

Class 252

Standard daffodils – named cultivars or seedlings (no species)

Class 253

Miniature daffodils – named cultivars or seedlings (no species)

Class 254

Species and species hybrid daffodils. All sizes of species and species hybrids are eligible for this class.

ADS Point Scale for Judging Cut Specimens			
	Cultivar	Species	Historic
Condition	20	50	40
Form	25	15	15
Substance and Texture	15	10 (substance) 5 (texture)	10
Color	15	10	15
Stem and Pose	15	5	5
		5	5
Size	10	0	10
Total	100	100	100

For miniature daffodils, both cut specimens and container-grown, the judges will substitute "Form and Grace" for Form. In exhibits of 3 stems, the judges may deduct up to 5 points for lack of uniformity.

ADS Scale of Points for Judging Container-Grown Exhibits	
Exhibit as a Whole	35
Symmetry with uniform development of each plant	20
Floriferousness	10
Condition and correctness of container and label	5
Bloom	55
Condition	10
Form – typical of the cultivar	10
Substance and texture	10
Color	10
Pose	5
Stem	5
Size – typical of the cultivar	5
Foliage	10
Condition of foliage	5
Color of foliage	5
TOTAL	100

1930 GCV TEST COLLECTION VARIETIES:

Admiral Trompe	2Y-O
Admiration	8Y-O
Aeolus	1W-Y
Albatross	3W-YYO
Bath's Flame	3Y-YYO
Bedouin	2W-YYO
Bernardino	2W-YYO
Break o'Day	2W-W
Brilliancy	3Y-YYO
Capella	2W-WYY
Crystal Queen	2W-W
Fair Alice	8
Firebrand	3WWY-R
G. H. van Waveren	1Y-Y
Giganteus (Gigantea?)	2 Y-Y
Glory of Sassenheim	1W-Y
Golden Pedestal	2Y-Y
Golden Sceptre	7Y-Y
Helios	8 Y-Y
Her Grace	2 W-YYW
Homespun	2 Y-Y
Horace	9 W-GOR
John Farquhar	1 Y-Y
King Alfred	1 Y-Y
Laureate	9 W-YYR
Laurens Koster	8 W-Y
Leonie	2 Y-Y
Lord Kitchener	2 W-Y
Masterpiece	3 W-OOR
Mount Erebus	2 W-W
Mrs. E. H. Krelage	1 W-W
Mustapha	1 Y-Y
N. jonquilla (Simplex)	13
N. x odoratus (Campanelli)	13
Olympia	1 Y-Y
Orange Cup	8 Y-YYR
Orange Queen	7 Y-Y

Primrose Phoenix	4 Y-Y
Queen of the North	3 W-Y
Red Beacon	3 W-OOR
Red Star	2 W-O
Robert Sydenham	1 Y-Y
Salmonetta	3 W-Y
Sir Ernest Shackleton	2 W-Y
Sir Francis Drake	1 Y-Y
Soleil Brilliant	8 Y-O
Southern Gem	2 W-W
Spring Glory	1 W-Y
Sulphur Beauty	1 W-W
Thelma	9 W-YYR
Tresserve	1 Y-Y
van Waveren's Giant	1 Y-Y
Weardale Perfection	1 W-Y
Whitewell	2 W-Y
Will Scarlett	2 W-O

THE GARDEN CLUB OF VIRGINIA
DAFFODIL COLLECTIONS

2011

Bravoure 1 W-Y
Rapture 6 Y-Y
Salome 2 W-PPY
Stratosphere 7 Y-O
Tahiti 4 Y-O
Triparite 11a Y-Y

2013

Ceylon 2 Y-O
Dallas 3 W-GWW
Ice Wings 5 W-W
Stainless 2 W-W
Weena 2 W-W
White Plume 2 W-W

2015

Curly Lace 11a Y-Y
Golden Echo 7 WWY-Y
Martinette 8 Y-O
Sailboat 7 W-W
Yazz 7 W-P

2017

Brooke Ager 2 W-P
Katie Heath 5 W-P
Cha-Cha 6 W-GPP
Sweet Smiles 7 W-P
Mary Gay Lirette 11a W-P

2019

Orange Comet 6W-YYO
Beautiful Eyes 7Y-O
Geranium 8W-O
Actaea 9W-YYR
Smiling Twin 11aW-Y

2012

Altun Ha 2 YYW-W
Beryl 6 W-YYO
Fragrant Rose 2 W-GPP
Jamestown 3 W-GYY
Merlin 3 W-YYR

2014

Chromacolor 2 W-P
Dreamlight 3 W-GWR
Intrigue 7 Y-W
Monal 2 Y-R
Quail 7 Y-Y

2016

Acropolis 4 W-O
Goose Green 3 W-GYR
High Society 2 W-GWP
Lovely Lynden 2 W-P
Manly 4 Y-O
Prototype 6 Y-YPP

2018

Growers Pride 1 Y-Y
Snowboard 2 W-GWW
Barrett Browning 3 WWY-O
Bridal Crown 4 W-O
Sunlight Sensation 5 Y-Y

2020

Altruist 3O-R
Falmouth Bay 3W-Gww
Gay Tabor 4W-O
Mallee 11a W-YPP
Ringtone 3Y-YYO

DAFFODIL CLASSIFICATIONS

Division 1 TRUMPET

One flower to a stem, trumpet as long or longer than perianth segments.

Division 2 LARGE CUPPED

One flower to a stem, cup more than one-third, but less than the length of the perianth segments.

Division 3 SMALL CUPPED

One flower to a stem, cup not more than one-third the length of the perianth segments.

Division 4 DOUBLE

Usually one flower to a stem, with doubling of the perianth segments or the corona, or both.

Division 5 TRIANDRUS DAFFODILS

Characteristics of *Narcissus triandrus* clearly evident. Usually two or more drooping flowers to a stem, perianth often reflexed.

Division 6 CYCLAMINEUS

Characteristics of *Narcissus cyclamineus* clearly evident. One flower to a stem, perianth reflexed and corona straight and narrow. Flower usually at an acute angle to the stem on a short neck.

Division 7 JONQUILLA AND APODANTHUS

Characteristics of *Narcissus jonquilla* group clearly evident. Usually one to three fragrant flowers to a stem, perianth segments spreading, not reflexed.

Division 8 TAZETTA

Characteristics of the *Narcissus tazetta* group clearly evident. Usually three or many fragrant, very short-cupped flowers to a stout stem, perianth segments spreading, not reflexed.

Division 9 POETICUS

Characteristics of the *Narcissus poeticus* group clearly evident. Usually one fragrant flower to a stem, pure white perianth, small flat cup edged with red.

Division 10 BULBOCODIUM

Characteristics of Section *Bulbocodium* clearly evident; usually one flower to a stem; perianth segments insignificant compared with the dominant corona; anthers dorsifixed (i.e. attached more or less centrally to the filament); filament and style usually curved.

Division 11 SPLIT CORONA

Usually one flower to a stem, corona split (not lobed) for at least one-third and usually half of its length.

Division 12 MISCELLANEOUS

All hybrid daffodils not falling into any of the foregoing divisions.

Division 13 SPECIES WILD VARIANTS AND WILD HYBRIDS

Any species, one bloom per stem. Any species more than one or more blooms to a stem.

AWARDS

AMERICAN DAFFODIL SOCIETY AWARDS

Gold Ribbon: Best standard daffodil.

White Ribbon: Best three stems of the same standard cultivar, seedling or species.

Rose Ribbon: Best standard seedling exhibited by its originator.

Purple Ribbon: Best collection of five different standard daffodils in the Horticulture Division of the show.

Red-White-Blue Ribbon: Best collection of five different standard cultivars, one stem each, of American breeding (Section A, Class 6 and Section B, Class 19).

Historic Daffodil Ribbon: Best pre-1940 cultivar in Historic Section (Section A, Class 12 and Section J, Classes 206-221).

Historic Best of Three Ribbon: Best three stems from classes 213-219.

Historic Collection of Five: Best collection of five pre-1940 standard cultivars (Section A, Class 12 and Section J, Class 221).

Intermediate Ribbon: Best intermediate-size cultivar selected from the Intermediate Section of the show, or from standard collections, or Youth or Small Growers Sections.

Best Intermediate Three-Stem Ribbon: Best set of three intermediate cultivars in the Intermediate Section or in standard collection classes of sets of three.

Best Intermediate Collection of Five Ribbon: Best collection of five different intermediate cultivars in the Intermediate Section.

Small Growers' Ribbon: Best daffodil (Section G, Classes 159-174).

Best Classic in Single Stem Classes: Best standard stem (Section L, Classes 233 – 239).

Best Classic Bloom Ribbon: Best standard stem (Section L).

Best Classic Three Stem Ribbon: Best three stems of one cultivar (Section L, Class 240).

Best Classic Collection of Five Ribbon: Best collection of five different cultivars (Section L, Class 241).

Youth Best Bloom Ribbon: Best Bloom in Youth Division (Section M, Classes 242 -249).

Brooke Ager Youth Challenge Ribbon: Best single stem of annual cultivar

selected by the ADS Youth Committee (Section M, Class 249).

Maroon Ribbon: Best collection of five different standard cultivars, one stem each, reverse bicolor, any division or divisions (Section B, Class 18).

Marie Bozievich Ribbon: Best collection of 12 different cultivars or species, one stem each from at least 4 RHS divisions (Section B, Class 20).

Elise Havens Ribbon: Best collection of 12 different cultivars, one stem each from at least 3 divisions of RHS divisions 5 through 10. (Section B, Class 21).

Throckmorton Ribbon: Best collection of 15 standard cultivars or species, one stem each, from 15 different RHS classifications, each labeled with name, division and color code (Section B, Class 22).

Quinn Award: Silver Medal or Ribbon for a collection of 24 labeled cultivars or species, one stem each, representing at least five divisions. Open only to ADS members. This medal may be won only once in all ADS shows by an exhibitor. A former winner may exhibit in this class, but may receive only the Quinn Ribbon. (Section B, Class 23).

Miniature Gold Ribbon: Best miniature daffodil in Horticulture Division.

Miniature White Ribbon: Best three stems of same miniature daffodils.

Miniature Rose Ribbon: Best miniature seedling exhibited by its originator.

Lavender Ribbon: Best collection of five different miniature cultivars and/or species.

Miniature Red-White-Blue Ribbon: Best collection of five different miniature cultivars, one stem each of American breeding (Section I, Class 202).

Delia Bankhead Ribbon: Best collection of nine miniature cultivars and/or species, one stem each, from at least three different RHS divisions (Section I, Class 203).

Roberta C. Watrous Award: Silver Medal or Ribbon for a collection of twelve different cultivars and/or species of miniature daffodils from at least three divisions. This medal may be won only once by any exhibitor in all ADS shows where offered. A former winner may exhibit in this class but may receive only the Watrous Ribbon. Open only to ADS members (Section I, Class 204).

Harold Koopowitz Miniature Collection Ribbon: Best collection of twenty-four different cultivars and/or species of miniature daffodils from at least five divisions. Open only to ADS members. (Section I, Class 205)

Standard Container-Grown Ribbon: Best standard container-grown named or seedling daffodil exhibit in the Container-Grown Section.

Miniature Container-Grown Ribbon: Best miniature container-grown named or seedling daffodil exhibit in the Container-Grown Section.

Species/Species Hybrid Container-Grown Ribbon: Best species/species hybrid container-grown daffodil exhibit in Container-Grown Section.

Silver Ribbon: Awarded to the exhibitor winning the most first place (blue) ribbons in the Horticulture Division.

THE GARDEN CLUB OF VIRGINIA AWARDS

Horticulture

***Eleanor Truax Harris Cup**

Blue Ribbon: Section A, Class 1

***The Mary McDermott Beirne Challenge Bowl**

Blue Ribbon: Section A, Class 2

Best Interclub Collection

Blue Ribbon: Section A, Class 3

***The Edith Hardison Walker Award**

Blue Ribbon: Section A, Class 4

***The Katherine Leadbeater Bloomer Award**

Blue Ribbon: Section A, Class 5

***The Louise Morris Goodwin Bowl**

Blue Ribbon: Section A, Class 6

***The Jennette H. Rustin Trophy**

Blue Ribbon: Section A, Class 7

The Suzanne Bresee Trophy

Blue Ribbon: Section A, Class 8

Worshipful Company of Gardeners of London Cup

Blue Ribbon: Section A, Class 9

***The Patricia Mann Crenshaw Award**

Blue Ribbon: Section A, Class 10

***The William G. Pannill Award**

Blue Ribbon: Section A, Class 11

***Anne Duvall Miller Massie Perpetual Trophy**

Blue Ribbon: Section A, Class 12

***Katherine Beale Perpetual Trophy**

Blue Ribbon: Section a, Class 13

***The Pat Lawson Memorial Trophy**

The best stem in Division 7, Classes 68-73.

***The Helen Louise Broyhill Trophy**

Best GCV member three stem standard exhibit (including Section E, Section A, Classes 1 and 2; excluding Classes 9 and 250;)

***The Jacqueline Byrd Shank Memorial Trophy**

Best GCV member exhibit: Miniature

The Member Clubs' Award

Best standard bloom in Show

The Gale and Lockwood Frizzell Award

Section N, Class 250

Garden Club of Virginia Open Sweepstakes

Horticultural Sweepstakes to be presented to the exhibitor with the greatest number of Blue Ribbons.

***Elizabeth Clopton Brown Member Sweepstakes Trophy**

Horticulture Sweepstakes to be presented to the GCV member with the greatest number of Blue Ribbons.

Centennial Challenge: 1930 Test Collection

Blue ribbon in Class 251.

** Only GCV members winning a GCV Perpetual Trophy may keep the trophy for one year.*

RULES FOR HORTICULTURE EXHIBITORS

1. All classes are open to all daffodil growers except where specified.
2. Exhibitors are asked to register upon arrival at the show. **Registration closes at 9:30 am Tuesday, March 29th, 2022.**
3. All entry tags and labels will be provided. **Both the top, bottom and back of the entry card must be fully filled in.**
4. Entries may be made from 12:00 pm - 7:00 pm, Monday, March 28, 2022, and from 7:00 am - 10 am on Tuesday, March 29, 2022. All entries must remain in place until Tuesday, March 29 at 5:00 pm.
5. **Judging will begin at 10:15 am on Tuesday, March 29th**, at which time the show area will be cleared of all persons except show officials, judges and clerks until the show opens to the public.
6. Horticulture judges may not enter any class that they have been assigned to judge.
7. Information on an entry tag, including the exhibitor's number, which could compromise anonymity, must be concealed. Name labels or rubber stamp are encouraged.
8. The exhibitor must have grown all standard blooms in the open. Miniatures and containers may have been grown in protected areas.
9. Exhibitors may make up to three entries in each class for single stems or three of one variety provided that each is a different cultivar or species. Exhibitors may make only one entry in collection classes, including all classes in Section A.
10. All cut daffodil specimens will be shown without daffodil foliage. Yew Bush will be provided for staging blooms. Exhibitors may bring their own Yew for staging material. **PLEASE, no boxwood as it is not allowed at any GCV event.**
11. All collections of five or more stems must be exhibited in separate containers. Containers will be provided for all horticultural entries and will be clearly marked in the staging area.

12. The Garden Club of Virginia Club Collections must be entered in the name of the member club.
13. Each stem in an exhibit receiving an ADS Award must score 90 or more by the ADS scale of points.
14. Only one first, one second, and one third award will be given in each class. Honorable Mention awards may also be given, but only if all higher awards are given. If a blue ribbon has been awarded in a class eligible for an ADS ribbon, the ADS award may not be withheld.
15. First, second, third and honorable mention awards may be withheld by judges if, in their opinion, the exhibit is not worthy.
16. The Best Bloom is chosen only from Blue Ribbon Winners, with the exception of an outstanding horticulture specimen exhibited in a non-blue ribbon, multi-stem class.
17. When selecting the Best Bloom, all horticultural judges must be present. Selection is made by ballot.
18. Exhibitors are responsible for proper name or number. **Divisions and color codes are required in all classes.** The Royal Horticulture Society System of classification will be used. The authorities are *Daffodils to Show and Grow* (latest printing), and **www.daffseek.org**, which will be available for reference. Entries that are incorrectly named will not be judged.
19. The originator's name MUST appear on the label for each stem in the American-bred classes, except for seedlings shown by the originator.
20. No label may be changed except by the Show Chairman or Classification Chairman in the case of placement error. No bloom may be altered, added, substituted or removed after the judging has begun or after an award has been placed.

Miniatures

21. Miniature daffodils may be shown only in classes for miniatures. A Miniature daffodil is any cultivar on the current ADS Approved List of Miniatures. Any named, numbered, or species daffodil which appears graceful, with all its parts proportionately small, may be exhibited in the Miniatures classes and is eligible for all ADS Miniature awards, except that only numbered seedlings shown by the originator shall be eligible for the ADS Miniature Rose Ribbon. A guideline when judging miniatures is that a single-

floreted cultivar normally possess a flower less than 50 mm (1.97") in natural spread. For a multi-floreted miniature daffodil the guideline measurement for the floral mass is 72 mm (2.83") in natural spread. The judges may decline to judge any exhibit exceeding these measurements at the time of judging or penalize as they find appropriate.

Seedlings

22. Blooms of seedlings may be exhibited in all classes for named cultivars, provided they are identified by a number and classification assigned by the originator. If an exhibitor is not the originator, the originator's name must be included on each label. The originator of a daffodil is the person who first flowers the bulb, regardless of who made the cross and/or first planted the seed. Only seedlings shown by the originator are eligible for the Rose or the Miniature Rose Ribbons.

Miscellaneous

23. The Show Committee reserves the right to subdivide classes by cultivar or color code when there are three or more worthy exhibits of the same cultivar or color code and if at least three worthy exhibits are left in the class. Species may be subdivided by their botanical sections.
24. All judges shall follow the rules and terms for judging as set forth in the Garden Club of Virginia Flower Shows Handbook at **www.gcvirginia.org** and the American Daffodil Society's current *Handbook for Growing, Exhibiting, and Judging Daffodils*.
25. The decision of the judges is final. If an error is discovered in an exhibit after completion of judging, any award placed thereon (ADS, Special or Ribbon) shall be forfeited by the exhibitor. If an error is discovered BEFORE the judging is completed, the class MUST be re-judged.

For questions concerning the horticulture schedule contact

Nancy McLaughlin

540-460-5327

nancymcl@rockbridge.net

Class 3 “Raining Cats and Dogs” 4 Entries
According to theculturetrip.com, the top expression describing the rain that is an integral part of British life, is “it’s raining cats and dogs’ (which) has many theories. One very fanciful one is that in old England, dogs and cats used to sleep on the roofs of thatched houses, sliding off them when it started to rain.”

Create a floor design incorporating a bumbershoot - i.e., an umbrella or umbrellas. Exhibits will be displayed within an L-shaped 5’ x 3’ space with a gray floor covering against an aqua wall and may be arranged in place. To be viewed from the front and one side. Accessories are permitted. Please include a Statement of Intent of 25 words or fewer to communicate to the viewer the designer’s creative vision and intent.

Individual/Partner Division

Class 4 “Tea for Two” 5 Entries
Constance Spry, who rose to prominence from humble beginnings, in her youth found refuge in the garden, becoming a keen observer and proponent of using garden favorites as well as weeds and other unconventional materials in her designs. She never lost her sense of how the commonplace could be truly magnificent. In 1953 Constance prepared the flowers for Queen Elizabeth II’s coronation and luncheon that followed. Sheila Macqueen, trained at the Constance Spry School, like her mentor served as arranger for the British royal family and floral designer for the wedding reception of Prince Charles to Princess Diana at Buckingham Palace. In 1980 she toured and taught in the United States, sharing her flower expertise and elegant style at a day-long flower arranging program sponsored by four Richmond clubs of the Garden Club of Virginia.

Create a Tablescape for tea with Constance Spry and Sheila Macqueen using narcissus and garden flower favorites of pollinators. A 30” diameter round table will be supplied, covered by a moss green cloth. Exhibitors may add a table topper of their own choice. Exhibits will be viewed from all sides. Accessories are permitted. Please include a Statement of Intent of 25 words or fewer to communicate to the viewer the designer’s creative vision and intent.

Class 5 “Taking the Train” 4 Entries
Princess Diana’s wedding dress became one of the most iconic wedding dresses of all time, often dubbed the ‘most closely guarded secret in fashion history’ because so few details were revealed until its debut on Diana’s wedding day. Designed by David and Elizabeth Emanuel, a young designer couple who would suddenly find themselves propelled to the international stage, the choice was considered a patriotic one, supporting the UK’s fashion industry. The chosen dress was a silk-taffeta fairytale gown with Eighties era-defining puff sleeves and a 25-foot train, the longest in the history of royal wedding dresses. (Tatler, by Annabelle Spranklen, 29 July 2021).

In a Cascade design, recreate the Emanuel’s confection of Princess Diana’s showstopping train. Displayed on a 12-inch gray square pedestal 42 inches high, arrangement will be viewed from three sides against a black background, extending no more than 6 inches beyond any side of the pedestal and no higher than 30” inches. Please include a Statement of Intent of 25 words or fewer to communicate to the viewer the designer’s creative vision and intent.

Class 6

“Trailblazing New Worlds”

4 Entries

A GCV Judges’ Challenge Class for individuals enrolled in the GCV Judging Program

Queen Elizabeth I, a well-educated, highly intelligent, determined, shrewd, and sometimes-fiery red-haired ruler, reigned for 45 years from 1558 and brought to the English people what is generally considered one of the most glorious in English history. Often called by historians “the golden age in English history,” Elizabeth I encouraged the exploration of new worlds in order to keep pace with the changes that were taking place throughout Europe. Her patronage of the privateer Sir Frances Drake, who circumnavigated the globe (1577–80) and was the most renowned seaman of the Elizabethan Age, was acclaimed, sometimes questioned, and thoroughly legendary.

Be a trailblazer, and explore with the Garden Club of Virginia our newest design style - Casual Contemporary. Full details are debuted in the GCV website: www.gcvirginia.org in Our Work_Horticulture & Artistic Design_Resources/Downloads_Artistic Design_Contemporary Floral Styles & Designs. Contemporary and totally “today,” this new open, airy, relaxed style celebrates the unique beauty of each garden flower and breathes fresh air into our arranging world. Following the GCV initiative to employ alternatives to floral foam, please use creative methods of support other than floral foam, listing your chosen method along with your floral materials. Displayed on a 12-inch gray square pedestal 42 inches high, viewed from three sides against a black background, extending no more than 6 inches beyond any side of the pedestal and no higher than 30” inches. Please include a Statement of Intent of 25 words or fewer to communicate to the viewer the designer’s creative vision and intent.

Class 7

“Not Just Narcissus ”

4 Entries

“When Xa Tollemache first set foot in Helmingham Hall’s 400-acre grounds as its new chatelaine, she says she had ‘not the slightest clue’ about gardening - but she rolled up her sleeves, took an evening course and set to work. Since transforming Helmingham in Suffolk, she has become one of Britain’s foremost garden designers, winning a gold medal for her debut appearance at the Chelsea Flower Show in 1997 (the first of many prizes) and landscaping everything from ‘pocket-handkerchief’ London backyards to the grounds of Scottish castles. In the Millenium Garden at Castle Hill, Xa’s garden design surprises visitors with vegetables and leafy greens tucked in beside traditional flowers, their forms, patterns and colors complementing each others’ shapes and textures.

Create an arrangement for the center hall at Castle Hill, incorporating Xa Tollemache’s adventurous combinations which she incorporated into the Castle Hill Millenium Garden. Displayed on a 12-inch gray square pedestal 42 inches high, viewed from three sides against either a creamy white or a soft aqua background, extending no more than 6 inches beyond any side of the pedestal, with no height limitation. While daffodils are to be included, they need not predominate. Please include a Statement of Intent of 25 words or fewer to communicate to the viewer the designer’s creative vision and intent.

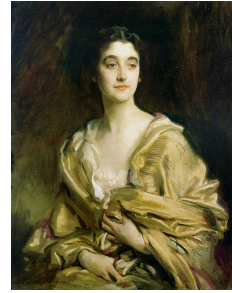
Class 8

“Lady Sybil Sassoon Cholmondeley”

4 Entries

Born and raised in London, the only daughter of Sir Edward Albert Sassoon, 2nd Bt. and Baroness Aline Caroline de Rothschild, Sybil first sat for John Singer Sargent at about eighteen years old and they became great friends. When in 1913 she married The Earl of Rocksavage, later the 5th Marquess of Cholmondeley, Sargent presented her a full oil portrait as a wedding gift. The shawl entwining her shoulders bears Sargent’s signature. Mother of three children and prominent society hostess, Lady Sybil chose to live in and rescue Houghton Hall, one of England’s finest Palladian houses. Built in the 1720s for Great Britain’s first Prime Minister, Sir Robert Walpole, there resided Walpole’s art collection, one of the greatest of European art in Britain. Successive generations

incurred debts that forced the sale of the collection to Catherine the Great of Russia and led to the deterioration of the entire estate. Only when the future 5th Marquess of Cholmondeley and his wife took on Houghton just after World War I did it eventually return to its former glory. As savoir and guardian, Sybil worked tirelessly to restore house and gardens, opening to the public - a truly courageous act at the time and one which saved Houghton Hall for posterity. A thoroughly remarkable person, during World War II, Lady Cholmondeley also served her country as Chief Staff Officer and Superintendent and Chief Staff Officer in Women's Royal Naval Service (WRNS), popularly known as "the Wrens," and later was made a Commander of the Order of the British Empire. The present Marquis has restored Houghton's five-acre walled garden and water garden as a tribute to his remarkable grandmother.



Create an Interpretive Design evoking John Singer Sargent's portrait of Lady Sybil Sassoon Cholmondeley. Displayed on a 12-inch gray square pedestal 42 inches high, viewed from three sides against either a creamy white or a soft aqua background, extending no more than 6 inches beyond any side of the pedestal, with no height limitation. An image of the portrait will be displayed with Class 8. Please include a Statement of Intent of 25 words or fewer to communicate to the viewer the designer's creative vision and intent.

Class 9

"SOS Signals"

4 Entries

Royal historian Hugo Vickers shares the secret signals communicated by Queen Elizabeth II from the position of her ever-present purse. Moving the handbag from one hand to another means that Her Majesty is ready to conclude her current conversation. Other "Telegraph" reported signals include moving the handbag to the table at dinner (end the event in 5 minutes) and placement of the bag on the floor (rescue, please!). Forever gracious, the monarch maintains her grace and allows her purse do the talking.

Fashion a Botanical Arts Embellished purse suitable for Queen Elizabeth II to wear on her arm to a garden party. Your design will incorporate dried floral material only, and Botanical Arts Embellishment guidelines are published in this Schedule. Viewed from three sides, exhibits will be displayed against an aqua wall on a table 6' x 18" covered with a black tablecloth. Purses may be displayed either hung on a black metal wreath stand, 35" high, with a 9" wide circular base, and 1/4" diameter supplied by the Artistic Design Committee, or on a black easel supplied by the exhibitor. The height of the wreath stand hook may be adjusted by the exhibitor. Display space on the table for each purse is 18" square. Exhibitors may place the hook into a container or base of their choice which is no wider than 12" in diameter. Please include a Botanical Arts Key Card and a Statement of Intent of 25 words or fewer to communicate to the viewer the designer's creative vision and intent.

Class 10

"Heads Up"

4 Entries

The Kitten Grayson Flowers London-based studio forms a cutting-edge "synaesthetic relationship with nature and a commitment to sustainability. . . Kitten . . . and Harriette Tebbutt, the studio's Creative Director . . . together have developed the studio's unique signature style - refined yet wild blooms paired according to habitat and season . . . They designed the iconic London Gate entrance to the (2018) RHS Chelsea Flower Show to great acclaim." (Flowers from the Farm)

Fashion a "Kitten-esque" Botanical Arts Couture headpiece that Kitten Grayson would love to wear to the opening of the RHS Chelsea Flower Show. Dried floral material

may be used. Each exhibit will be displayed atop a grapevine ball 8” in diameter painted taupe and supplied by the committee. A base of exhibitor’s choice may be included for the grapevine ball with headpiece, placed in an 18” square space on a 6’ x 18” table covered with a black tablecloth against an aqua wall. Please include a Botanical Arts Key Card as well as a Statement of Intent of 25 words or fewer to communicate to the viewer the designer’s creative vision and intent.

Class 11

“Two If By Sea”

6 Entries

*Listen, my children, and you shall hear
Of the midnight ride of Paul Revere*

...

*He said to his friend, “If the British march
By land or sea from the town to-night,
Hang a lantern aloft in the belfry-arch
Of the North-Church-tower, as a signal-light,—
One if by land, and two if by sea;
And I on the opposite shore will be,
Ready to ride and spread the alarm
Through every Middlesex village and farm,
For the country-folk to be up and to arm.”*

Henry Wadsworth Longfellow in 1860 wrote a poem chronicling silversmith Paul Revere’s warning on April 18, 1775 that British troops, disembarking from their man-of-war in Boston harbor, were on the move. Revere rode through the night from Charlestown to Lexington, his shouts echoing through the Massachusetts countryside, “The British are coming!”

Create an Echo Design, to be displayed on a 6’ table, 33” high, covered with a grey cloth against a grey background. Space for each exhibit will be 18” x 24” with no height restriction. Exhibits will be viewed from three sides. Please include a Statement of Intent of 25 words or fewer to communicate to the viewer the designer’s creative vision and intent.

Special Notes to Exhibitors:

Please use whenever possible an alternative to floral foam, and always in Class 6, “Contemporary Casual” Judge’s Challenge, as specified in the Schedule.

Also please pay close attention to GCV’s list of protected and invasive plants (www.gcvirginia.org_???)

Cheers! Artistic Design and Horticulture **materials will be recycled** to bring Spring to others, so please save them. Simply leave materials in the marked buckets provided at work-room closure. For questions **or to volunteer** to help: please contact Meredith Lauter at meredithlauter@gmail.com. Thank you!

Please be sure to visit our display of “The 10 Most **NOT** WANTED Invaders.” You may be surprised at what you see - we were!

REGISTRATION

Advance registration is required. Please register online at www.gcvirginia.org from January 15, 2022 to March 15, 2022.



Individuals who register are responsible for furnishing an exhibit or securing a substitute.

Registration Questions

Please direct any questions concerning registration or requests for entry cards to the Artistic Design Registration Coordinator: Bev Earman, msqa2001@yahoo.com

ARTISTIC DESIGN EXHIBITS

Exhibit Space

Lewis Ginter Botanical Garden provides a video of exhibit spaces for Artistic Design at www.lewisginter.org. Click on Visit_Facility Rental_Wedding and Events Virtual Tours Playlist.

A scale drawing of the Azalea Room display space is also included below.

Artistic Design Workrooms

Artistic Design Workrooms will be open from 12:00 noon to 7:00 pm on Monday, March 28, 2022 and from 7:00 am to 11:00 am on Tuesday, March 29, 2022.

Please remove from the Workrooms any materials you wish to take with you by 11:00 am on Tuesday, March 29, 2022.

To recycle unused floral materials, please place in designated buckets in the Workrooms for recycling.

Thank you!

Exhibit Placement, Passing, and Removal

Exhibits may be placed and passed from 12:00 noon to 7 pm on Monday, March 28, 2022 and from 7:00 am to 10:00 am on Tuesday, March 29, 2022.

All exhibits are to be in place and passed by 10:00 am on Tuesday, March 29, 2022.

Exhibits may be removed following the flower show at 5:00 pm on Tuesday, March 29, 2022.

DAFFODIL DAY OPEN

Daffodil Day Flower Show will be open to exhibitors, guests, and the public from 2:00 pm to 5:00 pm on Tuesday, March 29, 2022.

AWARDS

Awards will be presented at Daffodil Day at 2:00 pm on Tuesday, March 29, 2022.

ARTISTIC DESIGN DIVISION

1. The Schedule is known as "The Law of the Show."
2. InterClub Class exhibits are entered in the name of the GCV club and may be prepared by a team of club members.
3. Individual/Partner Class exhibits may be prepared by two GCV members working together.
4. An exhibitor(s) may enter as many classes as desired but only one entry per class.
5. Designs will be judged according to the GCV Principles of Design: balance, dominance, contrast, rhythm, proportion, and scale and the Elements of Design: light, space, line, form, size, pattern, texture and color. Creativity, distinction, conformance to and interpretation of the class and Schedule are important.
6. Flowers of the theme show (daffodil) must predominate in all designs unless otherwise specified in the Schedule. Class 1 "Kapow" and Class 7 "Not Just Narcissus" are exceptions where daffodils need not predominate.
7. Plants on the Endangered Species list may be used only if grown in exhibitor's garden and garden grown should be noted on the plant material card.
8. Seasonal, garden grown flowers are preferred.
9. Designs must include some fresh plant material with the exception of Botanical Arts entries.
10. Artificial flowers, foliage, and fruit are not permitted.

11. Treating fresh plant material by application of substances such as paints, dyes, etc. is not permitted. Plants may be clipped, stripped, bent, or otherwise manipulated.
12. Living creatures are not permitted.
13. The following are permitted, unless prohibited by the schedule:
 - a. Accessories
 - b. Bases
 - c. Contrived flowers and/or forms made of fresh or dried plant material
 - d. Cut fruit or vegetables
 - e. Objects that add interest when tastefully used, e.g., nests, feathers, coral, sponges, sea fans, starfish, antlers, etc.
 - f. Container-grown plants growing in soil as part of Pot-et-Fleur or other appropriate classes
 - g. Dried and/or treated plant material
 - h. Cards of Intent (3x5 inches)
14. There are several types of backdrops used in the flower shows. No flower material may touch the sides, back, or roof if present. Arrangements will be judged in proportion to the size of the backdrops, if applicable.
15. A description of floral design styles included in the Schedule may be found at [www.gcvirginia.org/Our Work/Horticulture and Artistic Design/Artistic Design/Traditional Floral Styles and Designs/Contemporary Floral Styles and Designs](http://www.gcvirginia.org/Our%20Work/Horticulture%20and%20Artistic%20Design/Artistic%20Design/Traditional%20Floral%20Styles%20and%20Designs/Contemporary%20Floral%20Styles%20and%20Designs).

ARTISTIC PROCEDURES

1. All Artistic entries must be pre-registered with the Artistic Design Registration Chairman.
2. The exhibitor must confirm the information on the exhibit card (emailed to exhibitor following registration): name(s) and address(es), GCV membership, novice and mentor-novice status. *A novice is one who has not won a Blue ribbon or a GCV novice award in a GCV Flower Show. A mentor is one who has won a Blue ribbon or a GCV novice award in a GCV Flower Show. Mentor-novice partners should check the appropriate box on the exhibit card.*
3. Upon completion of the design, prepare a 3x5 inch card listing plant material, noting "G" for garden grown or "F" for florist flowers. A Pot-et- Fleur must include "R" for rooted material or "C" for cut material. Plants on the Virginia Endangered Species list grown in an exhibitor's garden must also be noted.
4. All exhibits are passed by the Passing Judges prior to the opening of the show. Passing Judges confirm that the exhibit meets the style specified in the Schedule, published space requirements, Exhibitor's information (including Novice and Mentor eligibility), and floral materials list / Key Card in Botanical Arts. An exhibitor whose exhibit does not meet the Schedule will be given an opportunity, if time allows, to correct. An exhibit may only be disqualified by consultation with the GCV Artistic Design Committee Chairman and the GCV Judging Coordinator.
5. For questions concerning the Artistic Design Schedule, please contact Meredith Lauter, meredithlauter@gmail.com.
6. For maximum participation flexibility, when classes are filled a Waiting List will be maintained. The Artistic Design Committee may add or delete classes or adjust the number of entries within a division, class, or classes.

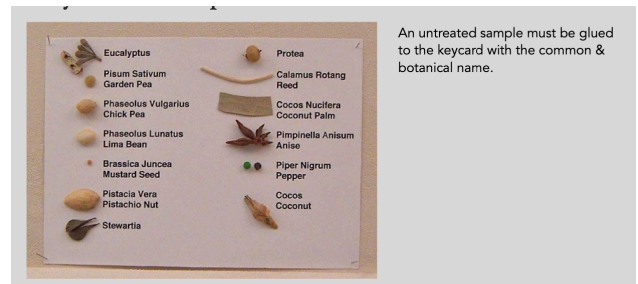
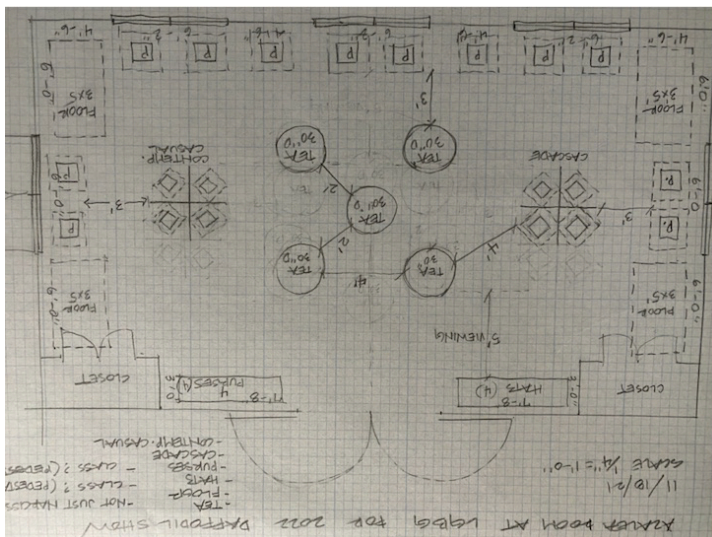
BOTANICAL ARTS EMBELLISHMENT Instructions for Class 9

1. **Botanical Arts Embellishment** exhibits incorporate a man-made object enhanced with dried plant material. Materials may be artificially treated. Complete coverage of the object is not required. All plant material used must be dried, including flowers, foliage, seeds, pods, nuts (in or out of shells), vegetables, twigs, vines, reeds, etc. Only plant material, mechanics and their surface treatments (i.e., paints, nail polishes, varnishes, waxes, etc.) are permitted. Artificial, endangered and locally invasive plant material may not be used.
2. Any plant material may be cut, incised or shaped to enhance artistic effect.

3. Processed products may not be included in design (i.e., couscous, tapioca, ground cinnamon, ground coffee or ground pepper, etc.).
4. Accessories may be included at the discretion of the exhibitor as long as they are an integral part of the design created by the exhibitor from natural plant materials.
5. A key card must accompany each entry with an untreated sample of each plant material used in the design, correctly identified with botanical and common names, affixed to a 4" X 6" white, unlined card. The required information must be printed in pencil or black waterproof ink or typed.
6. A Statement of Intent, of 25 words or fewer, on a 4" x 6" white, unlined card, printed in black waterproof ink or typed, should accompany each exhibit.

BOTANICAL ARTS COUTURE Instructions for Class 10

1. **Botanical Arts Couture** exhibits are designs emulating an item of clothing and/or other fashion accessory created from all dried plant material. All plant material used must be dried, including flowers, foliage, seeds, pods, nuts (in or out of shells), vegetables, twigs, vines, reeds, etc. Only plant material, mechanics and their surface treatments (i.e., paints, nail polishes, varnishes, waxes, etc.) are permitted. Artificial, endangered and locally invasive plant material may not be used.
2. Any plant material may be cut, incised or shaped to enhance artistic effect.
3. Plant materials may be artificially treated.
4. Mechanics or structural base material should be invisible.
5. Processed products may not be included in design (i.e., couscous, tapioca, ground cinnamon, ground coffee or ground pepper, etc.).
6. A Statement of Intent, of 25 words or fewer, on a 4" x 6" white, unlined card, printed in black waterproof ink, should accompany each exhibit to communicate to the viewer the designer's creative vision and intent.
7. A key card must accompany each entry with an untreated sample of each plant material used in the design, identified with botanical and common names, affixed to a 4" X 6" white, unlined card. Please print in pencil or black waterproof ink or typed.



An untreated sample must be glued to the keycard with the common & botanical name.

*Azalea Room at Lewis Ginter Botanical Garden
Class 2 will be located in the Kelly Education Center foyer, flanking the LGBG donor tree.
Class 11 will be located in the Kelly Education Center hallway adjacent to the Azalea Room.*

DAFFODIL DAY - PHOTOGRAPHY SHOW 2022 SCHEDULE AND GUIDELINES

- 1.** The Photography Division is open to all members of the Garden Club of Virginia.

- 2. Advanced Registration is required.** Registration will open **January 15, 2022**, and close **March 1, 2022**. Members may submit two photographs, but only one per class. A separate online **[REGISTRATION FORM](#)** is required for entry. A total of twelve photographs will be initially accepted in each class. Using the same guidelines outlined in paragraph 11, six photographs per class will be chosen for judging at the Daffodil Day Photography Show. A digital image for each registered photo should be sent to **gcvdaffodilphotography2022@gmail.com** no later than **March 1, 2022**. Emailed images should be fully edited and may not be altered in any way in the printed version if chosen for the in-person show. Please ensure the image is in Jpg format, is between 2-5 mb in size and is sent “actual size” when attached to the email. The subject heading of the email should be: **Daffodil Day_Your Name_Photography Class #**. The body of your email should include a **Title** for your photograph and **Statement of Intent** (25 words or less). Please rename your photo to read:
Class #_Last Name_First Initial.Jpg
(Class 1_Smith_P.Jpg)

- 3.** All photographs will be passed and evaluated by the Photography Committee to verify that class specifications have been met. If a photograph is not passed, the exhibitor will be notified and allowed, if time permits, to send a replacement photograph.

- 4.** Exhibitors will be notified if their entry has been accepted by **March 5, 2022**. Entries accepted into the show should be printed, flush mounted on **Black Foam Core** and mailed to ensure receipt no later than **March 25, 2022**. Photographs should be a minimum of 36” and a maximum of 50” in perimeter. No framing or matting is allowed. **Tip:** The larger the printed image the better for “display and judging purposes”.

- 5.** Mail printed images to: Dana Parker, 2833 River Rd., Virginia Beach, VA 23454. If images are to be returned to the owner, an appropriate self-addressed padded envelope (ideally 14” X 19”) with postage applied should be included. Padded envelopes need to be large enough to accommodate protective packaging. Boxes are permitted and can be reused if a check is included in the amount of \$15 made out to: The Garden Club of Virginia. **Two printed ENTRY FORMS** (to be attached to printed image) should be included. This form will be sent to those who are selected for the show. Attach one form to the back of the photo and one form should be loose. Photographs may also be picked up at the close of the show.

- 6.** Only the photography committee may reclassify an entry, but only with the permission of the exhibitor.

- 7.** If forced to withdraw, an exhibitor must notify the division chairman:
Dana Parker (danacparker@gmail.com) or
Sandy Geiger (sgeiger48@me.com)
Please find a substitute unless there is a waiting list for the class.

- 8.** Each photograph must be the work of the exhibitor under whose name it is registered.

- 9.** All editing must be done prior to entering. Editing at any stage must be the work of the exhibitor. This includes enhancement for color or clarity, removal of a part of the image, combining images, or distorting the original subject.
- 10.** Awards will be given for first, second and third place in each class. Honorable mention will be at the discretion of the judges. In addition, “special awards” will be given for Best in Show, The Claire Smithers Mellinger Award for Excellence and the Novice Award for best image by a novice. A novice is someone who has never won first place in a GCV photography show or any other photography show.
- 11.** Judging will be based on the following criteria:

Creativity 25

Composition 25

Technical Skills 20

Conformance/Interpretation 20

Distinction 10

Total Points 100

Please refer any questions to:

Dana Parker - danacparker@gmail.com

Sandy Geiger- sgeiger48@me.com

Class Descriptions “ACROSS THE POND”

Class One: “Tea For Two A Still Life photograph incorporating daffodils and other objects arranged artistically.

Class Two: “Trooping of Colours” A Landscape or Garden with Daffodils on “Parade.”

Class Three: “Crown Jewels” A Close-up color image of a single daffodil bloom.

Class Four: “Lucy In The Sky With Diamonds” An Abstract photograph using creative techniques and incorporating daffodils or daffodil elements.

Class Five: My Fair Lady A Black and White image of one or more daffodils.

Class Six: “Alice Through the Looking Glass” Novice Class: A Reflection of a daffodil or a group of daffodils.



GARDEN CLUB
OF VIRGINIA

*D*AFFODIL *D*AY
RICHMOND 2022

Awards List

Horticulture
Artistic Design
Photography

2022 Daffodil Day Horticulture Presidential Awards List

Award	Class	Recipient	Garden Club or City
Eleanor Truax Harris Cup *	1	Not Awarded	Not Awarded
Mary McDermott Beirne Challenge Bowl *	2	Janie Vaughan	Janie Vaughan
Best Interclub Collection	3	Dolley Madison	Dolley Madison
Edith Hardison Walker Award *	4	Catherine Gillespie	Catherine Gillespie
Katherine Leadbeater Bloomer Award *	5	Cecilia (Ceci) Brown	Cecilia (Ceci) Brown
The Louise Morris Goodwin Bowl *	6	Janet Hickman	Janet Hickman
The Jennette H. Rustin Trophy *	7	Katharine Kingsley	Katharine Kingsley
Suzanne Bresee Trophy"	8	Janet Hickman	Janet Hickman
Worshipful Co.of Gardeners of London Cup, Novice	9	Not Awarded	Not Awarded
The Patricia Mann Crenshaw Award *	10	Not Awarded	Not Awarded
The William G. Pannill Award *	11	Not Awarded	Not Awarded
Anne Duvall Miller Massie Perpetual Trophy *	12	Cecilia (Ceci) Brown	Cecilia (Ceci) Brown
Katherine Beale Perpetual Trophy"	13	Janet Hickman	Janet Hickman
The Pat Lawson Memorial Trophy *		Dianne Spence	Williamsburg
The Helen Louise Broyhill Trophy *		Cecilia (Ceci) Brown	Gloucester
The Jacqueline Byrd Shank Memorial Trophy *		Dianne Spence	Williamsburg
The Member Clubs' Award		Nancy Fuchs	~
The Gale and Lockwood Frizzell Award	250	Janet Hickman	Hillside
Centennial Challenge	251	Cecilia (Ceci) Brown	Gloucester
Garden Club of Virginia Open Sweepstakes (also receives ADS Silver Ribbon)		Janet Hickman	Hillside
The Elizabeth Clopton Brown Member Sweepstakes Trophy *		Janet Hickman	Hillside
The Brooke Ager Youth Challenge Class	249	Not Awarded	~
Number of Exhibitors (from Registration)	83		
Number of InterClub Horticulture Collections (from floor counter)	9		
Number of Exhibits (from floor counter)	594		
Number of Stems (from floor counter)	1317		

2022 Daffodil Day
Horticulture Blue Ribbon Recipients

Section	Class	Exhibitor ID	Recipient Name	GCV Club	Variety
A	2	H14	Janie Vaughan	Hillside	Collection
A	3	HC12	Dolley Madison	Dolley Madison	Collection
A	4	H11	Catherine Gillespie	Dolley Madison	Collection
A	5	H22	Cecilia (Ceci) Brown	Gloucester	Collection
A	6	H07	Janet Hickman	Hillside	Collection
A	7	H71	Katharine Kingsley	Leesburg	Parent and Child
A	8	H07	Janet Hickman	Hillside	Collection
A	12	H22	Cecilia (Ceci) Brown	Gloucester	Collection
A	13	H07	Janet Hickman	Hillside	Collection
B	14	H14	Janie Vaughan	Hillside	Collection
B	15	H14	Janie Vaughan	Hillside	Collection
B	16	H14	Janie Vaughan	Hillside	Collection
B	17	H14	Janie Vaughan	Hillside	Collection
B	18	H33	Peggy Bowditch	~	Collection
B	19	H52	Carla and William Stanley	~	Collection
C	24	H50	Ginger Wallach	Fauquier and Loudoun	Seedling of 2017-036
D	25	H73	Dana Kozak	~	Temba
D	26	H32	Nancy Fuchs	~	Makers Mark
D	29	H46	Bridget Bryant	Dolley Madison	Diamond Lake
D	29.1	H45	Fran Wall	~	Bravoure
D	30	H33	Peggy Bowditch	~	Chanson
D	31	H21	Kit Sullivan	Boxwood	Mt. Hood
D	32	H12	Dianne Spence	Williamsburg	
D	33	H12	Dianne Spence	Williamsburg	Terminator
D	33	H33	Peggy Bowditch	~	Thalia
D	34	H16	Elizabeth DeBergh	Warren County	Pacific Rim
D	35	H48	Suzanne Bresee	Dolley Madison	Pioneer
D	36	H13	Lucy Wilson	Martinsville	Century
D	37	H11	Catherine Gillespie	Dolley Madison	Festivity
D	38	H32	Nancy Fuchs	~	
D	39	H32	Nancy Fuchs	~	American Idol
D	40	H52	Carla and William Stanley	~	Macarena
D	40.1	H32	Nancy Fuchs	~	Conestoga
D	41	H52	Carla and William Stanley	~	Culmination
D	42	H52	Carla and William Stanley	~	Pink Charm
D	43	H42	Miriam Green	Ashland	Homestead
D	43.1	H12	Dianne Spence	Williamsburg	Snowboard
D	43.2	H52	Carla and William Stanley	~	Louise Randall
D	44	H46	Bridget Bryant	Dolley Madison	New Penny
D	45	H10	Cappelli Maureen	Northern Neck	Altruist
D	46	H52	Carla and William Stanley	~	Ringtone
D	48	H13	Lucy Wilson	Martinsville	Woodlawn Prince
D	50	H37	Katherine Mazzocco	~	Firebird
D	51	H15	David Vaughan	~	La Paloma
D	53	H05	Dale Sayers	Ashland	Cutless

2022 Daffodil Day
Horticulture Blue Ribbon Recipients

Section	Class	Exhibitor ID	Recipient Name	GCV Club	Variety
D	54	H32	Nancy Fuchs	~	Crackington
D	55	H42	Miriam Green	Ashland	Daphne
D	56	H60	Anne Thompson	James River	Bridal Crowns
D	57	H32	Nancy Fuchs	~	Ginter's Gem
D	58	H07	Erica Gilliam	~	Intrigue
D	58	H58	Janet Hickman	Hillside	Apache Tears
D	60	H06	Julianna Stone	Gloucester	Tuesday's Child
D	61.1	H05	Dale Sayers	Ashland	Thalia
D	61.2	H05	Dale Sayers	Ashland	Starlight Sensation
D	62	H21	Kit Sullivan	Boxwood	Jet Fire
D	66	H32	Nancy Fuchs	~	Sugar Rose
D	67	H46	Bridget Bryant	Dolley Madison	Protocol
D	68.1	H45	Fran Wall	~	Swewetness
D	68.2	H32	Nancy Fuchs	~	Penny Perone
D	69	H12	Dianne Spence	Williamsburg	Indian Maid
D	71.1	H21	Kit Sullivan	Boxwood	Beautiful Eyes
D	71.2	H07	Janet Hickman	Hillside	Golden Echo
D	72	H58	Erica Gilliam	~	Bell Song
D	73	H07	Janet Hickman	Hillside	Pueblo
D	74	H05	Dale Sayers	Ashland	Golden Dawn
D	76	H52	Carla and William Stanley	~	Avalanche
D	76	H52	Carla and William Stanley	~	Glorious
D	79	H21	Kit Sullivan	Boxwood	White Petticoat
D	80	H33	Peggy Bowditch	~	Jabberwocky
D	81	H14	Fran Wall	~	Plant America
D	81	H45	Janie Vaughan	Hillside	
D	84	H01	Glenna Graves	Spotswood	Bittern
E	86	H46	Bridget Bryant	Dolley Madison	Ambergris
E	87	H51	Lee McLaughlin	~	Wild Rover
E	89	H57	Candy Crosby	Albemarle	Highgrove
E	90	H12	Dianne Spence	Williamsburg	Windy City
E	93	H11	Catherine Gillespie	Dolley Madison	Treasure Waltz
E	94	H21	Kit Sullivan	Boxwood	Fortissimo
E	95	H12	Dianne Spence	Williamsburg	Cape Cornwall
E	96	H21	Kit Sullivan	Boxwood	Precocious
E	97	H13	Lucy Wilson	Martinsville	Century
E	103	H13	Lucy Wilson	Martinsville	Peacock
E	104	H13	Lucy Wilson	Martinsville	River Queen
E	105	H48	Suzanne Bresee	Dolley Madison	New Penny
E	111	H13	Lee McLaughlin	~	Barrett Browning
E	111	H51	Lucy Wilson	Martinsville	Tuckahoe
E	115	H05	Dale Sayers	Ashland	Double Fashion
E	117	H73	Dana Kozak	~	Erlicheer
E	118	H35	Pamela Stevenson	Ashland	
E	121	H46	Bridget Bryant	Dolley Madison	Katie Heath

2022 Daffodil Day
Horticulture Blue Ribbon Recipients

Section	Class	Exhibitor ID	Recipient Name	GCV Club	Variety
E	123	H52	Carla and William Stanley	~	Rapture
E	126	H07	Janet Hickman	Hillside	
E	128	H46	Bridget Bryant	Dolley Madison	
E	128	H46	Bridget Bryant	Dolley Madison	
E	129	H37	Katherine Mazzocco	~	Quail
E	130	H13	Lucy Wilson	Martinsville	Pappy George
E	131	H14	Janie Vaughan	Hillside	
E	132	H52	Carla and William Stanley	~	Beautiful Eyes
E	133	H58	Erica Gilliam	~	Bell Song
E	134	H13	Lucy Wilson	Martinsville	Sailboat
E	135	H05	Dale Sayers	Ashland	Golden Dawn
E	137	H13	Lucy Wilson	Martinsville	Geranium
E	140	H21	Kit Sullivan	Boxwood	White Petticoat
E	141	H62	Fran Carden	Almemarle	Sailorman
E	142	H13	Lucy Wilson	Martinsville	Smiling Twin
E	145	H13	Lucy Wilson	Martinsville	Mesa Verde
E	146	H13	Lucy Wilson	Martinsville	henriquesii
F	147	H15	David Vaughan	~	Collection
F	148	H14	Janie Vaughan	Hillside	Collection
F	152	H22	Cecilia (Ceci) Brown	Gloucester	Collection
F	153	H52	Carla and William Stanley	~	Collection
F	156	H07	Janet Hickman	Hillside	Collection
G	159	H66	Dana Flanders	Augusta	King Alfred
G	160	H55	Coates Clark	Martinsville	
G	161	H31	Virginia Gillock	Augusta	Falmouth Bay
G	162	H55	Coates Clark	Martinsville	Rip van Winkle
G	163	H31	Virginia Gillock	Augusta	Protocol
G	164	H69	Carrie Darracott	Augusta	Golden Echo
G	165	H23	Kay Tyler	Boxwood	Actaea
G	166	H54	Susan Auman	~	Hawera
G	167	H21	Kit Sullivan	Boxwood	Mt. Hood
G	170	H55	Coates Clark	Martinsville	Rop Van Winkle
G	171	H55	Coates Clark	Martinsville	Rapture
G	172	H55	Coates Clark	Martinsville	Intrigue
G	173	H54	Susan Auman	~	Ornatus
G	174	H55	Coates Clark	Martinsville	W.P. Milner
H	177	H12	Dianne Spence	Williamsburg	Yellow Xit
H	179	H12	Dianne Spence	Williamsburg	Angel's Whisper
H	180	H12	Dianne Spence	Williamsburg	Englander
H	181	H25	Jane Hammond	Dolley Madison	Twinkling Yellow
H	182	H16	Elizabeth DeBergh	Warren County	Yellow Minnow
H	186	H37	Katherine Mazzocco	~	Baby Boomer
H	187	H74	Erin Degnan	~	N.henriquesi
H	192	H73	Dana Kozak	~	Tete-a-Tete
H	193	H12	Dianne Spence	Williamsburg	Hummingbird

2022 Daffodil Day
Horticulture Blue Ribbon Recipients

Section	Class	Exhibitor ID	Recipient Name	GCV Club	Variety
H	194	H25	Jane Hammond	Dolley Madison	Twinkling Yellow
H	195	H01	Glenna Graves	Spotswood	Minnow
H	197	H07	Janet Hickman	Hillside	Oxford Gold
H	198	H33	Peggy Bowditch	~	Itsy Bitsy Snlitsy
H	199	H22	Cecilia (Ceci) Brown	Gloucester	Little ?
H	200	H22	Cecilia (Ceci) Brown	Gloucester	N bulbocodium
I	201	H25	Jane Hammond	Dolley Madison	Collection
I	202	H07	Janet Hickman	Hillside	Collection
I	203	H07	Janet Hickman	Hillside	Collection
J	206	H58	Erica Gilliam	~	Dutch Master
J	208	H05	Dale Sayers	Ashland	Firebrand
J	209	H05	Dale Sayers	Ashland	Feu de Joie
J	210	H37	Katherine Mazzocco	~	Beryl
J	211	H33	Peggy Bowditch	~	Geranium
J	212	H54	Susan Auman	~	Sonata
J	213	H54	Susan Auman	~	Dutch Master
J	215	H22	Cecilia (Ceci) Brown	Gloucester	Elegance
J	217	H61	Kim Cory	Albemarle	Beryl
J	218	H05	Dale Sayers	Ashland	Geranium
J	219	H54	Susan Auman	~	Ornatus
J	220	H22	Cecilia (Ceci) Brown	Gloucester	Hawera
J	221	H05	Dale Sayers	Ashland	Collection
K	223	H52	Carla and William Stanley	~	Pink China
K	225	H12	Dianne Spence	Williamsburg	Little Alice
K	226	H22	Cecilia (Ceci) Brown	Gloucester	Tom Terrific
K	228	H07	Janet Hickman	Hillside	Ollie
K	232	H07	Janet Hickman	Hillside	Collection
L	233	H33	Peggy Bowditch	~	Ben Loyal
L	235	H32	Nancy Fuchs	~	Capisco
L	236	H73	Dana Kozak	~	Erlicheer
L	237	H22	Cecilia (Ceci) Brown	Gloucester	Ruth Heller
L	240	H73	Dana Kozak	~	Avalanche
L	241	H22	Cecilia (Ceci) Brown	Gloucester	Collection
N	250	H07	Janet Hickman	Hillside	Collection
N	251	H22	Cecilia (Ceci) Brown	Gloucester	Collection
O	252	H25	Jane Hammond	Dolley Madison	Golden Echo
O	253	H07	Janet Hickman	Hillside	Tete-a-Tete
O	254	H07	Janet Hickman	Hillside	N. fernandesii

Daffodil Day 2022 Artistic Design Awards List

Inter Club Division

Mrs. Littleton H. Mears Trophy

This perpetual award was given by the Garden Club of the Eastern Shore in memory of Mrs. Littleton H. Mears, founder. It is awarded to a member club of the Garden Club of Virginia for the Best Inter Club Arrangement at the annual Daffodil Show.

Best InterClub Arrangement

Blue ribbon required

Exhibit entered in the name of a GCV Club and award won in the name of the GCV Club

Garden Club of the Eastern Shore

Inter Club Class 3, "Raining Cats and Dogs" Interpretive Floor Design

Quad Blue - Best in Show Inter Club Award Blue ribbon required

Garden Club of the Eastern Shore

Inter Club Class 3, "Raining Cats and Dogs" Interpretive Floor Design

Individual/Partner Division

Tri-Color (may be won either by a single exhibitor or by two partners working together (see below) but only one Tri Color is awarded in the Daffodil Show)

Blue ribbon required

Ginger Reed and Caroline Van Leer, Blue Ridge Garden Club

Individual/Partner Division, Class 11, "Two if by Sea" Echo Design

This arranging partner team includes a Novice

The Decca Gilmer Frackelton Award

This perpetual award, given in memory of Decca Gilmer Frackelton by her family and the Rappahannock Valley Garden Club, is awarded annually at the Garden Club of Virginia Daffodil Show/Daffodil Day to the Best Arrangement in the show by an Individual. First awarded in 2007.

Best in Show by an Individual

Blue ribbon required

Linda Schlesinger, Fairfax Garden Club

Individual/Partner Division, Class 4, "Tea for Two" Functional Tablescape Design

The Sandra Sadler Baylor Award

First presented in 2004, this perpetual award was given by Sandra Sadler Baylor for the Most Creative Arrangement by an individual. A nationally acclaimed flower arranger and member of the Virginia Beach Garden Club and the Garden Club of Norfolk, through many years of artistic judging Sandra has become enamored by creative spirit. In donating this award, she wishes to encourage that creative spirit in others.

Most Creative Arrangement in Individual/Partner Classes

No ribbon is required

RoseMarie Bundy, Tuckahoe Garden Club of Westhampton

Individual/Partner Division, Class 9, "SOS Signals," Botanical Arts Embellished Purse

RoseMarie Bundy is also a Novice exhibitor

The Hunter Hankins Savage Award

This perpetual award was given by the Garden Club of Norfolk in memory of Hunter Savage, the twenty-ninth President of the Garden Club of Virginia. It is awarded to the best Novice arrangement in the annual Daffodil Show. Best Novice Arrangement in Individual Partner/Classes

No ribbon required to win

Best Novice Arrangement

Catherine Cole, Garden Club of Gloucester

Individual/Partner Division, Class 5, "Taking the Train," Cascade Design

Catherine Cole is also a Novice exhibitor

The Mentor Award

This perpetual award highlights the treasured mentor-novice relationship that arises from teamwork, sharing, education, and excellence, all hallmarks of the Garden Club of Virginia. It is awarded for a design which presents an innovative, creative, and skillful interpretation of the Schedule, executed by a registered mentor-novice partner team in a GCV Artistic Design or Botanical Arts division that has placed second or first in its class. Given in 2021 by Meredith Reutershan Lauter in honor of Molly Trapani, Garden Club of Norfolk, and Rose Marie Bundy, Tuckahoe Garden Club of Westhampton, both award-winning GCV exhibitors who as novices studied, exhibited, persevered, and excelled, passing forward

their legacy and serving as highly respected teachers and mentors to others. "When you get where you're going don't forget to turn back around and help the next one in line." Tim McGraw, Humble and Kind

Best Mentor-Novice Partnership Arrangement

Blue or Red ribbon required.

Ginger Reed and Caroline Van Leer, Blue Ridge Garden Club

Individual/Partner Division, Class 11, "Two if by Sea" Echo Design

This arranging partner team includes a Novice

**Daffodil Day 2022
Photography Awards List**

CLASS ONE: TEA FOR TWO STILL LIFE

- #1: Elizabeth DeBergh – The Garden Club of Warren County **HM**
- #2: Annie Rex – The Garden Club of Gloucester **N HM**
- #3: Kacky Gallotta – The Nansemond River Garden Club **N Yellow**
- #4: Sandra Brown – The Garden Club of Norfolk **N BLUE**
- #5: Allison Lavigne – The Garden Club of Norfolk **N HM**
- #6: Catherine Cole – The Garden Club of Gloucester **N RED**

CLASS TWO: THE TROUPING OF THE COLORS

- #7: Catriona Erler - Albemarle Garden Club **RED**
- #8: Karin Rindal - The Garden Club of Fairfax
- #9: Virginia Gillock – The Augusta Garden Club **N YELLOW**
- #10: Delane Porter – Dolley Madison Garden Club **N**
- #11: Connie Owen – The Virginia Beach Garden Club **BLUE**
- #12 Frances Talley – The Garden Club of Alexandria **N**

CLASS THREE: CROWN JEWELS

- #13. Connie Owen – The Virginia Beach Garden Club **BLUE**
- #14. Elizabeth DeBergh – The Garden Club of Warren County **RED**
- #15. Donna Moulton – The Garden Club of Fairfax
- #16. Victoria Macmillan – Albemarle Garden Club **YELLOW**
- #17. Kacky Gallotta - The Nansemond River Garden Club **N HM**
- #18. Kathy Wirtala – The Rappahannock Valley Garden Club

CLASS FOUR: LUCY IN THE SKY WITH DIAMONDS

- #19. Janet James - The Augusta Garden Club **N HM**
- #20. Lesley Covington – The Little Garden Club of Winchester **N BLUE and NOVICE AWARD**
- #21. Tulley Raetz – The Blue Ridge Garden Club **N**
- #22. Jane Hammond- The Dolley Madison Garden Club **RED**
- #23. Sherry Rawls Bryce - The Little Garden Club of Winchester **N YELLOW**
- #24. Allison Lavigne - The Garden Club of Norfolk **N**

CLASS FIVE: MY FAIR LADY (BLACK AND WHITE)

- #25. Virginia Gillock- The Augusta Garden Club **N BLUE and BEST IN SHOW**
- #26. Connie Owen - The Virginia Beach Garden Club
- #27. Jane Hammond -Dolley Madison Garden Club **YELLOW**
- #28. Victoria Macmillan – The Albemarle Garden Club
- #29. Diane Ginsberg – The Garden Club of the Eastern Shore **RED**
- #30. Kim Butler - The Nansemond River Garden Club **N**

CLASS SIX: ALICE THROUGHT THE LOOKING GLASS (NOVICES ONLY)

- #31. Frances Talley - The Garden Club of Alexandria **N YELLOW**
- #32. Connie Kellam - The Garden Club of Norfolk **N RED**
- #33. Sherry Rawls Bryce - The Little Garden Club of Winchester **N BLUE –and CLAIRE SMITHERS MELLINGER AWARD**
- #34. Catherine Cole – The Garden Club of Gloucester **N HM**
- #35. Allison Lavigne - The Garden Club of Norfolk **N HM**